

CHEMISAFE®

SAFETY STORAGE CABINETS

HIGH DENSITY PVC SAFETY CABINETS FOR STRONG ACIDS



HIGH DENSITY PVC



SAFETY CABINETS FOR STRONG ACIDS



CS105PVC



CS100PVC



CS101PVC



CS102PVC



CS104BPVC



HIGH DENSITY PVC



SAFETY CABINETS FOR STRONG ACIDS



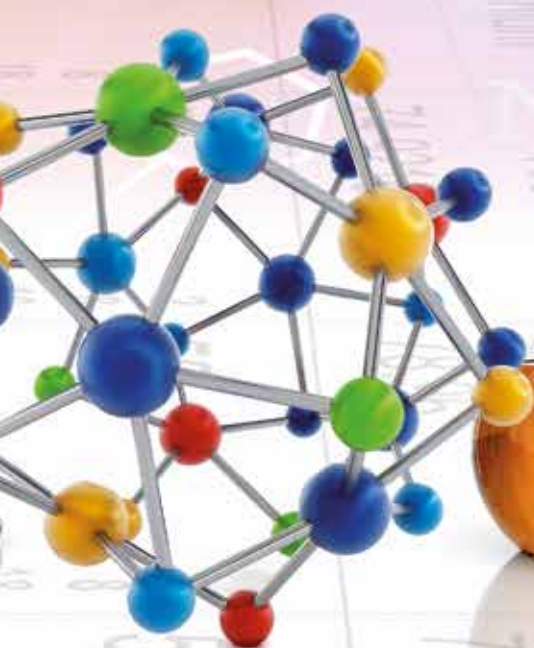
CS106PVC



CS103PVC



CS104PVC



HIGH DENSITY PVC



SAFETY CABINETS FOR STRONG ACIDS

SPECIFICATIONS:

- In compliance with EN 61010 Norm.
- Safety signs complying with ISO 3864 norm.
- Separation for "product category".
- Modular solutions.
- Completely manufactured from 18 mm thickness of PVC HD.
- Cover fan and plinth completely manufactured from 1,0 mm thickness steel sheet, cold pressed, epoxy coated with acid resistant epoxy powders electro-statically applied at a temperature of 200°C, which ensures a layer thickness higher than 90 microns on the whole surface of the cabinet.
- Basin form shelf.
- Load capacity 40 kg for shelf, evenly distributed.
- Plastic hinged doors.
- Doors opening angle 110°.

CODE	OPTIONALS	EXTERNAL DIMENSIONS W x D x H (mm)
WLRIP6060	SHELF FOR 60 OR 120	545 x 535 x 30
RFCS60	FILTER FOR 60 BASIC (SPARE PART FOR CS 60 AND CS60 A+B)	
RFCS120	FILTER FOR 120 BASIC (SPARE PART FOR CS120)	
DIAM 125BP	ELECTRO EXHAUST FAN IN METALLIC BOX, CABLE, ON/OFF SWITCH - FILTER COMPARTEMENT (FILTER NOT INCLUDED)	290 x 290 x 270
RSOLCA	FILTER Acids FOR EXHAUST FAN DIAM125BP	

CODE	DESCRIPTION	SHELVES	EXTERNAL DIMENSIONS W x D x H (mm)	INTERNAL DIMENSIONS W x D x H (mm)	WEIGHT Kg
CS106PVC	CS 120 PVC (FAN AND FILTER INCLUDED)	3 + 3 PVC SHELVES	1140 x 600 x 1900	1090 x 544 x 1500	99
CS105PVC	CS 120 BASIC PVC	3 + 3 PVC SHELVES	1140 x 600 x 1600	1090 x 544 x 1500	87
CS103PVC	CS 60 PVC (FAN AND FILTER INCLUDED)	3 PVC SHELVES	600 x 600 x 1900	544 x 544 x 1500	85
CS102PVC	CS 60 BASIC PVC	3 PVC SHELVES	600 x 600 x 1600	544 x 544 x 1500	77
CS104PVC	CS 60A+B PVC (FAN AND FILTER INCLUDED)	2 + 2 PVC SHELVES	600 x 600 x 1900	544 x 544 x 1500	86
CS104BPVC	CS 60 A+B BASIC	2 + 2 PVC SHELVES	600 x 600 x 1600	544 x 544 x 1500	78
CS101PVC	CS 60 UB PVC	2 PVC SHELVES	600 x 500 x 700	544 x 444 x 600	32
CS100PVC	CS 120 UB PVC	2 + 2 PVC SHELVES	1200 x 500 x 700	1160 x 444 x 600	43



Authorized dealer:

FIAT FORNITURE INDUSTRIALI
ARTICOLI TECNICI
TECNOLOGIE sas
CORSO NINO BIXIO, 16
12051 ALBA (CN)
TEL. 0173 290898 - 366669
FAX 0173 365277
www.fiatalba.it
E-MAIL: info@fiatalba.it
C.FISC. e PIVA 02713460042
C.C.I.A.A. 33986/1999